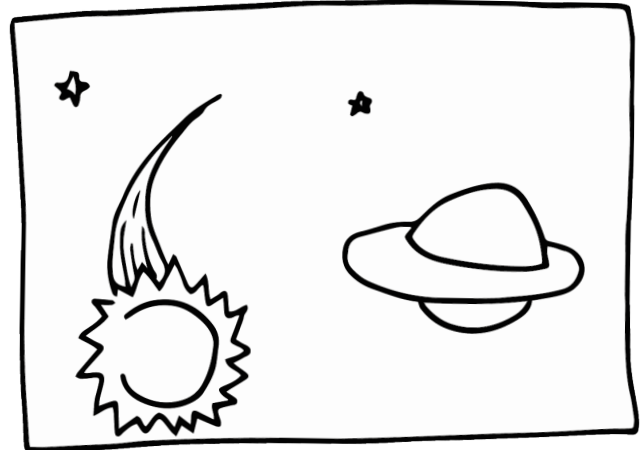


NOTHING SLIPS THROUGH THE CRACKS

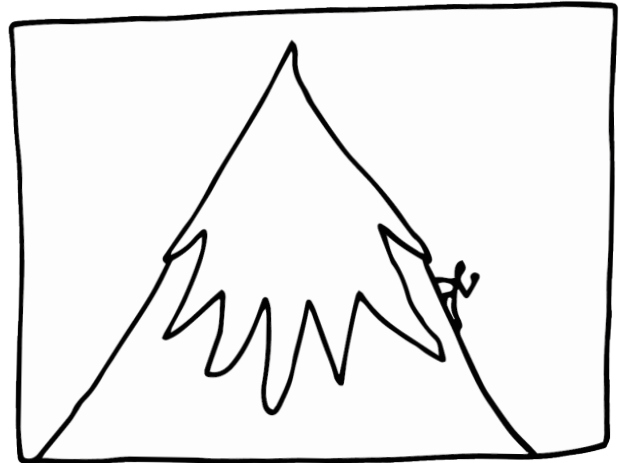
Think or talk about what each of these lines from Psalm 36:5-6 (*The Message*) could mean.

Then add to the drawings, connecting them with your own life and imagination.

"GOD'S LOVE IS METEORIC,
HIS LOYALTY ASTRONOMIC,



HIS PURPOSE TITANIC,
HIS VERDICTS OCEANIC.



YET IN HIS LARGENESS
NOTHING GETS LOST;



NOT A HUMAN, NOT A MOUSE
SLIPS THROUGH THE CRACKS."